

TOPOGRAPHIC SURVEY
NAPOLEON WAREHOUSE, INC.

PART OF THE SE 1/4, SEC. 6, T-5-N,
 R-7-E LIBERTY TOWNSHIP, CITY OF
 NAPOLEON, HENRY COUNTY, OHIO

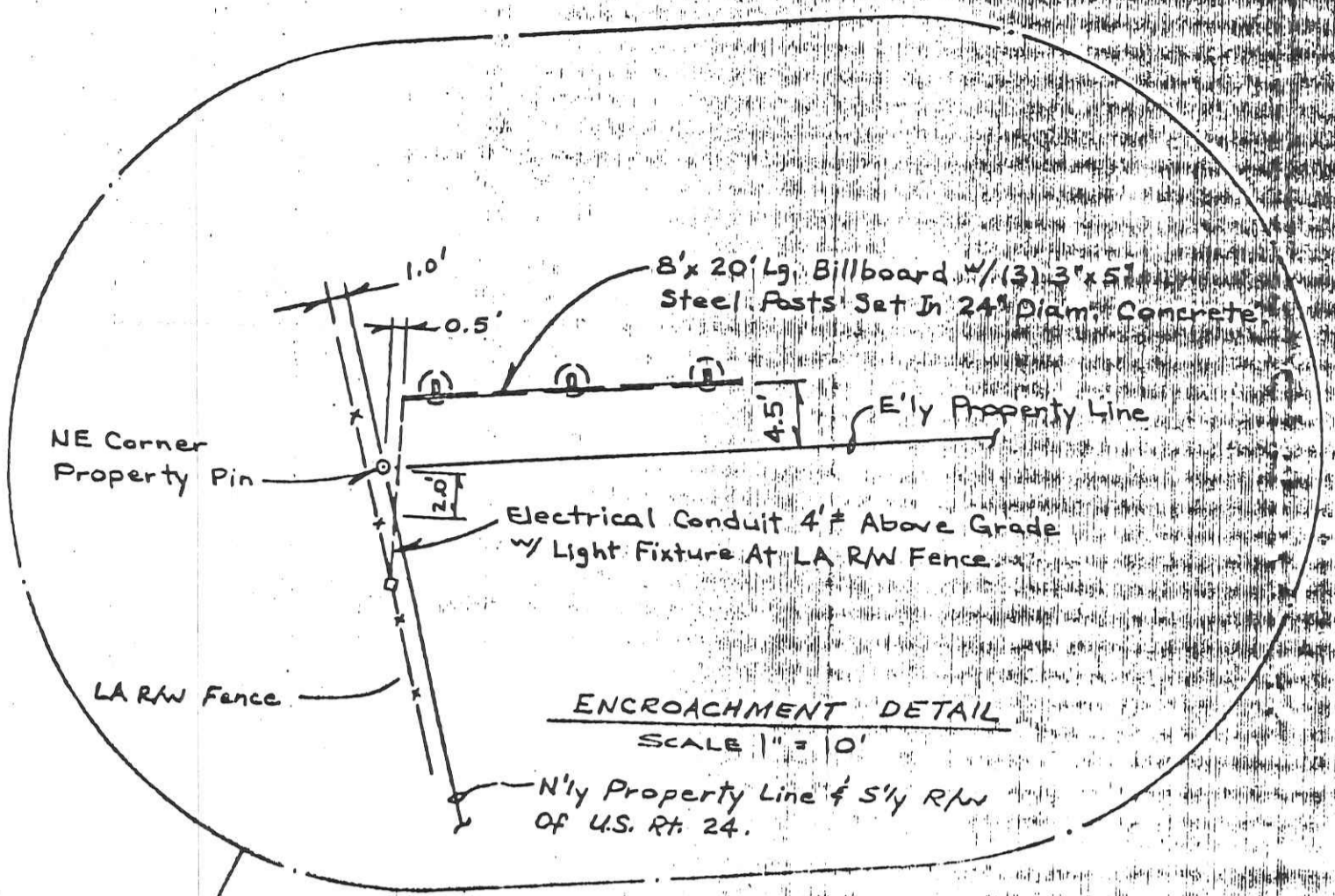
SE Corner Section 6,
 Liberty Twp, City of
 Napoleon, Henry County, Ohio

2 1/2" x 2" CB
 7/8" PK Nail in North Side of P
 198.5' E. & 59' S. of S.E. Corner
 Property Pin.

BENCH MARK 678.34
 7/8" PK Nail in North Side of P
 198.5' E. & 59' S. of S.E. Corner
 Property Pin.

ADD 600 TO ALL ELEVATIONS
 FOR U.S.S DATUM

SCALE 1" = 20'



S'ly Edge of
 Asphaltic Concrete Pavement
 East Bound Traffic Lane
 US Rt. 24

FUTURE
 PARKING
 LOT

NEED 10" THICK
 ROCK PAVING LOT
 FUTURE 4" ASPHALT
 PAVING TO FINISH GRADE

INDUSTRIAL DRIVE 60' R/W
 (24' Wide Asphaltic Concrete)

Aggregate Parking Edge

4'-16-99
 DEEP PAVES ?

1165
 Independence

WA KLINGER
 7/8/98

C2